

CASCADE ORCHARDS IRRIGATION COMPANY PROJECT UPDATE

Washington Water Trust (WWT)

IWG

July 27, 2017

Greg McLaughlin, WWT Project Manager



WASHINGTON
WATER TRUST

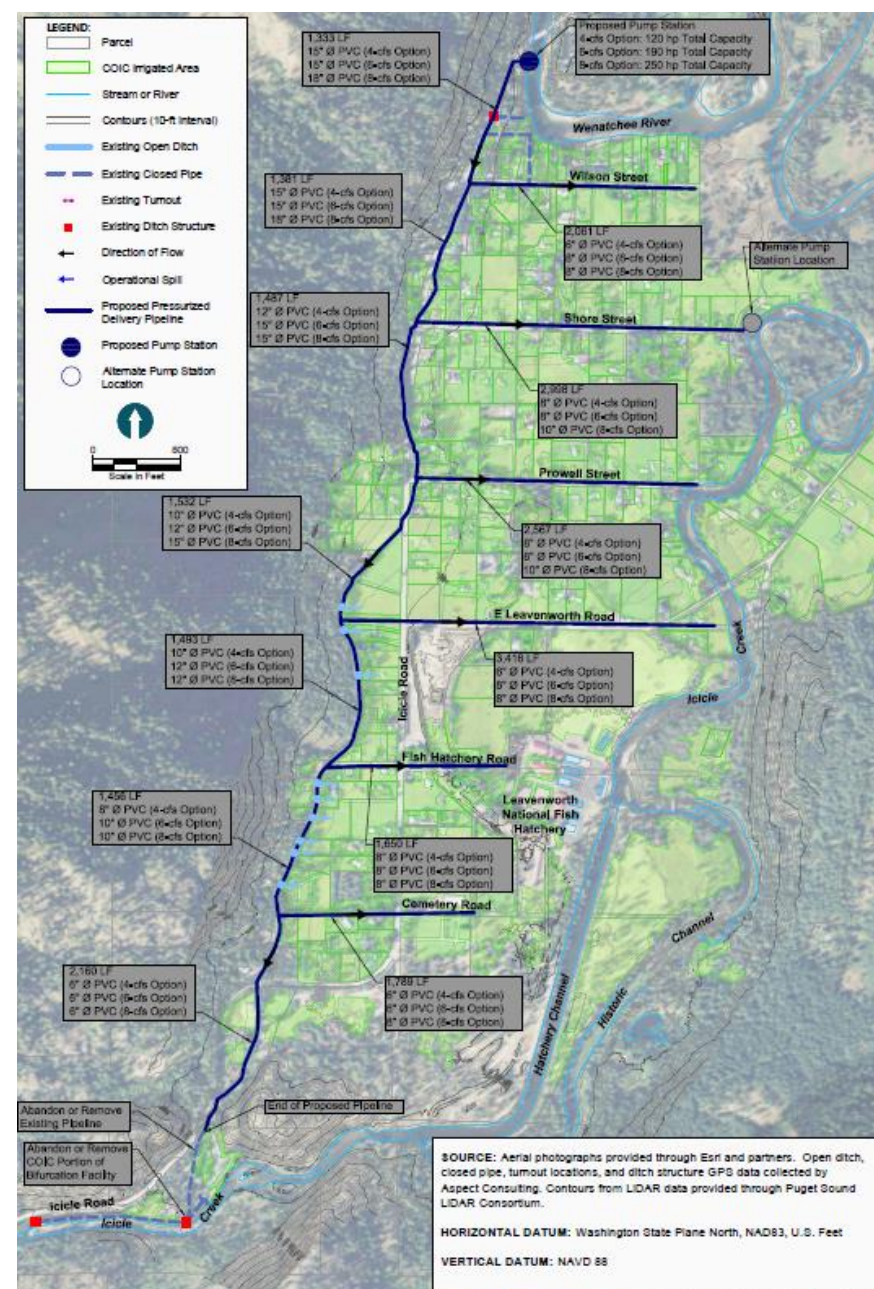
Working to restore our state's rivers and streams.

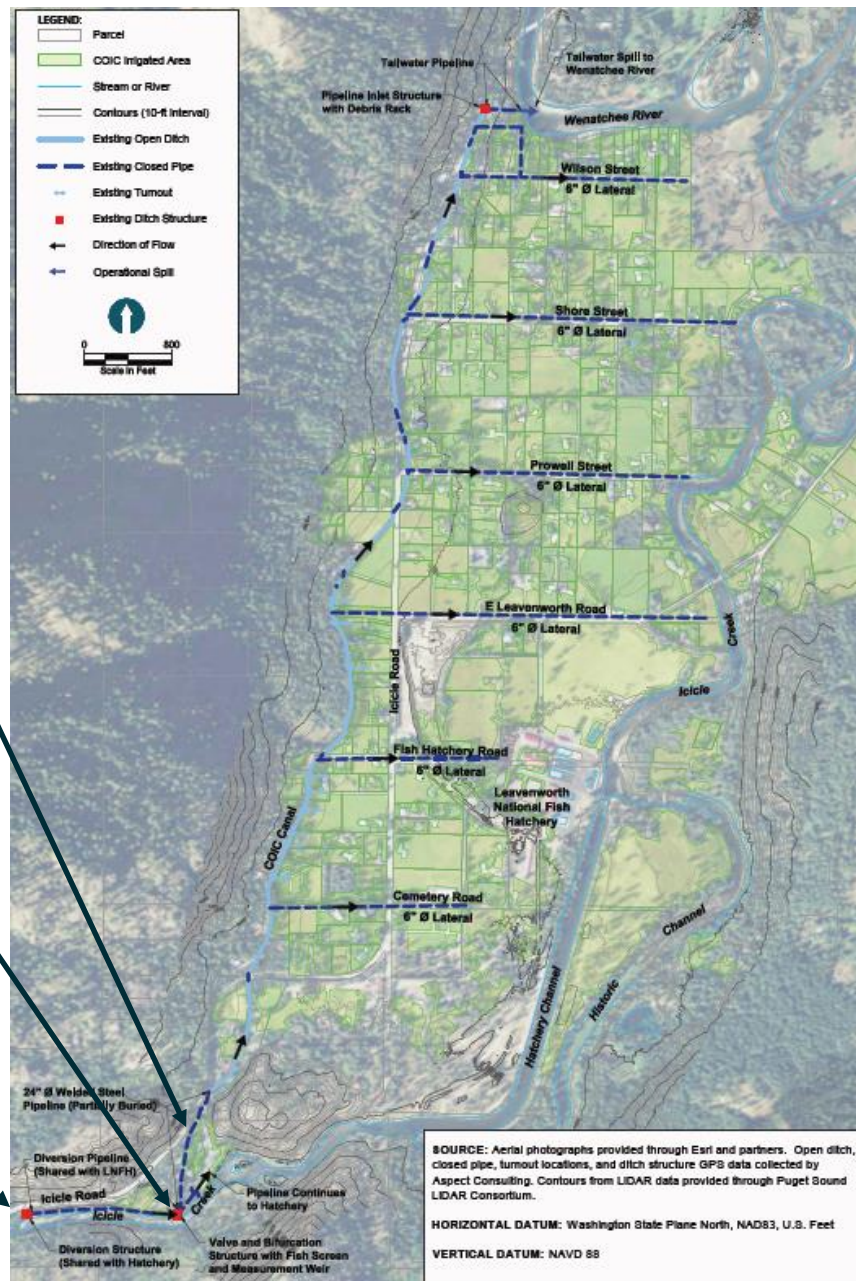


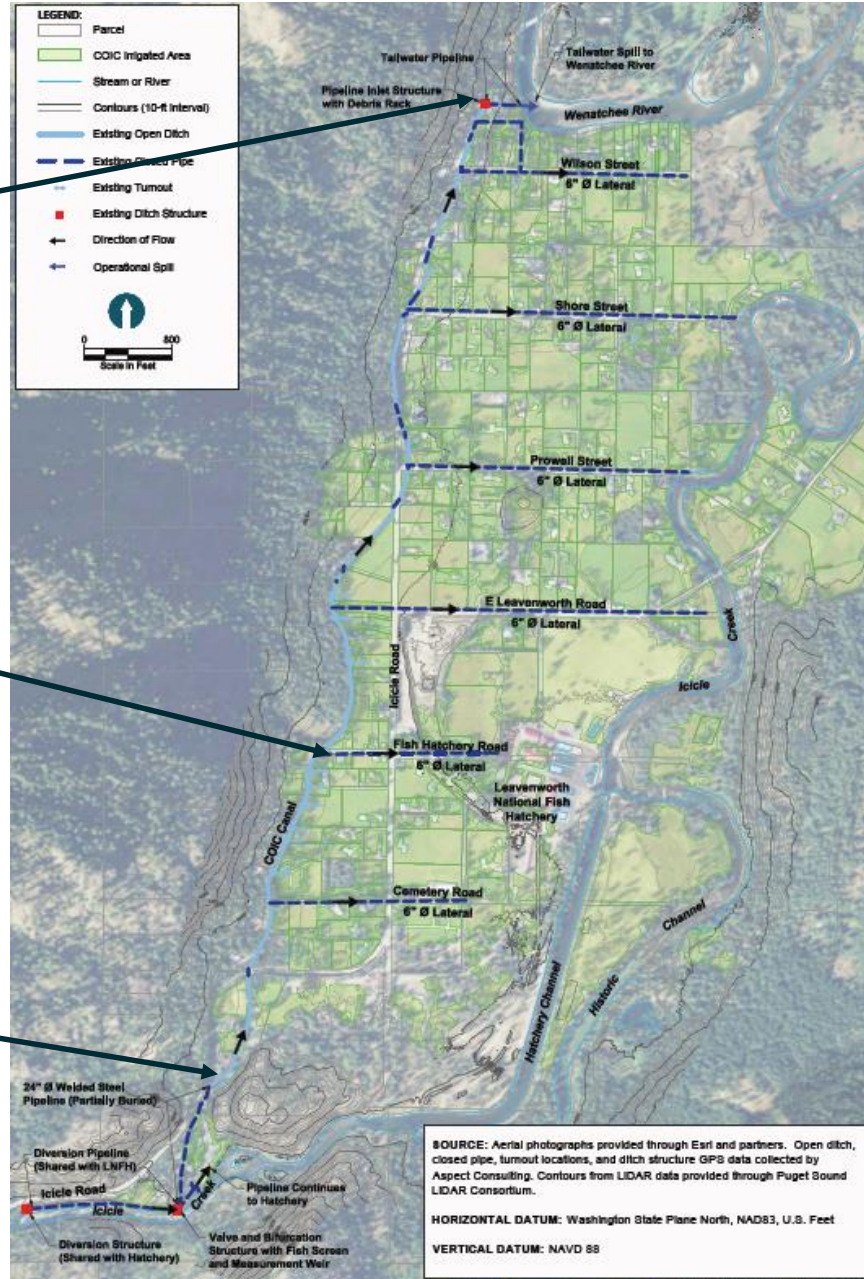
WASHINGTON
WATER TRUST

Alternative 1

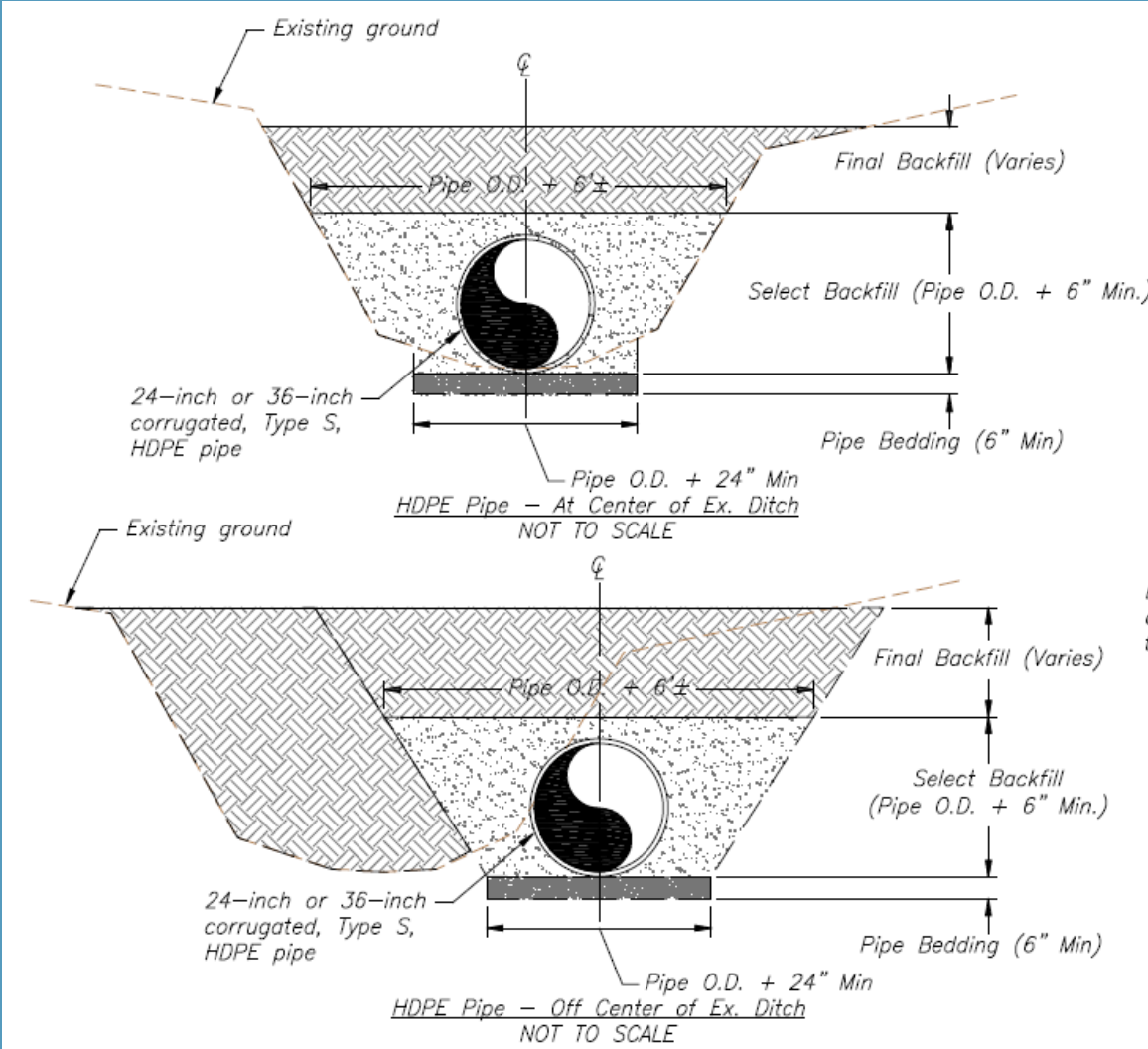
- Pressurized, on-demand delivery system
- Pump station on Wenatchee River or Icicle Creek near Shore Street
- Evaluated for capacities of 4 cfs to 8 cfs







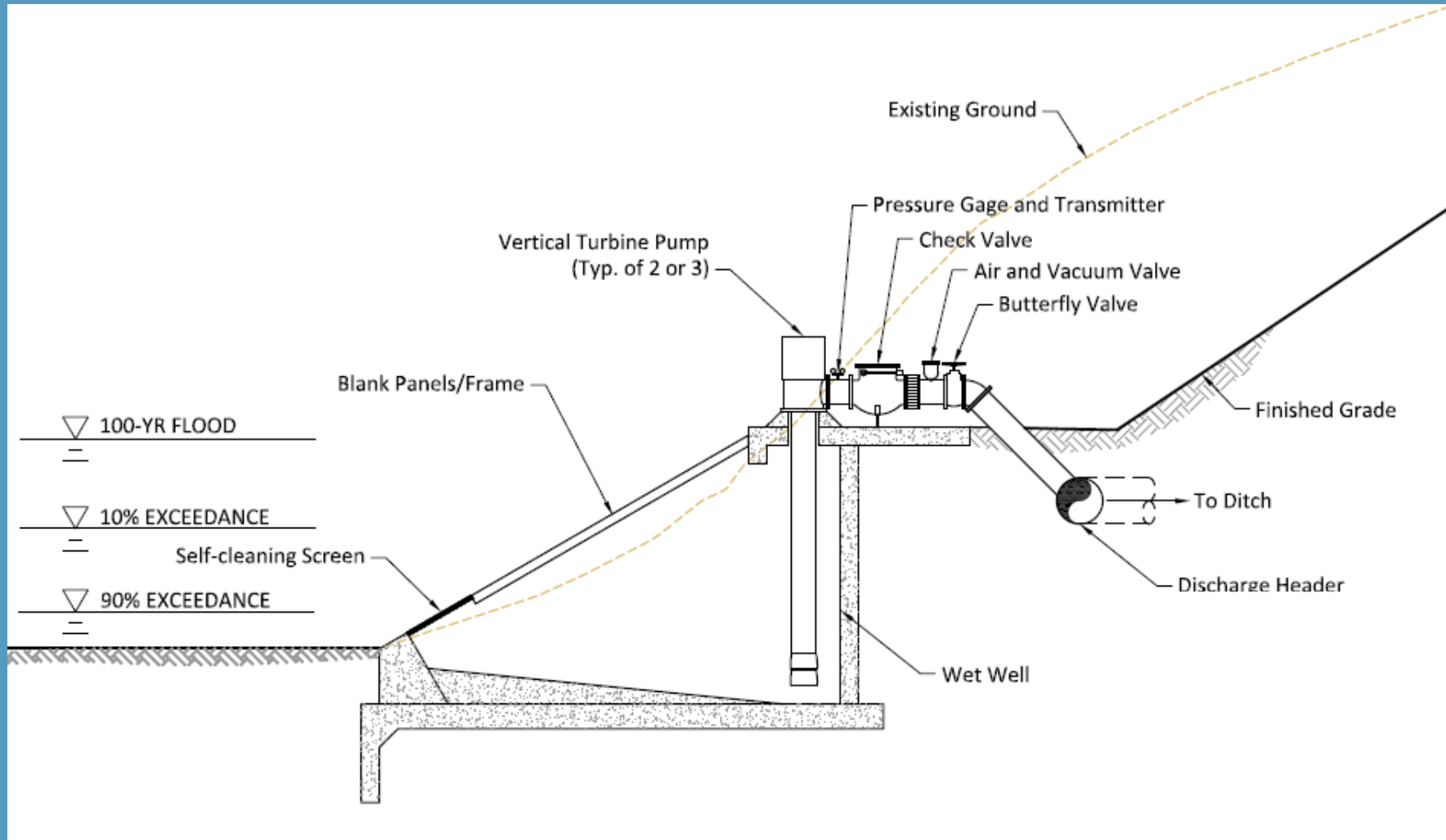
Example – Piping of Ditch



Example – Intake/Pump Station at River Bank



Example – Intake/Pump Station at River Bank



Alternative 1 – Hydraulic Analysis

Item	4-cfs Capacity	6-cfs Capacity	8-cfs Capacity
Design Flow	4 cfs	6 cfs	8 cfs
Pumping, TDH	183 feet	188 feet	192 feet
Total Pumping Power	120	190	250
Main Line Sizing	6-inch to 15-inch	6-inch to 15-inch	6-inch to 18-inch
Main Line Pressures	20 psi to 73 psi	20 psi to 76 psi	20 psi to 77 psi
Lateral Sizing	6-inch to 8-inch	6-inch to 8-inch	8-inch to 10-inch
Lateral Pressures	31 psi to 64 psi	30 psi to 65 psi	34 psi to 67 psi

PROGRESS TO DATE

- Work with COIC Board and Shareholder Advisory Group to develop a preferred project alternative
- May 4, 2016 Shareholder Meeting – Vote by mail or in person for proposed alternative -70% Approval with contingencies.
- Identify Preferred pump station sites for shareholder vote - #1 site has 98% shareholder approval.
- Secure funding – BPA, PRCC, CBWTP – Total allocated - \$2.672 million (out of \$4.0 - \$4.7 million needed). Pending applications for SRFB, Trib Com, and IEGP
- Perform additional field investigations in Conceptual Design
- Begin negotiations for easement at Pump Station Site

NEXT STEPS

- Develop detailed design drawings, specifications, opinion of costs and related analysis
- Perform environmental review and secure required permits
- Secure funding for construction and operation
- Complete water right changes
- Bid the project and enter into a contract with the lowest qualified bidder
- Complete construction and testing of the new system
(Construct pipe to replace existing ditch and laterals during off-season)

QUESTIONS?

Greg McLaughlin

greg@washingtonwatertrust.org
509.844.4146

103 West 2nd Avenue, Suite 203
Ellensburg, WA 98926

1530 Westlake Ave N, Suite 400
Seattle, WA 98109
206.675.1585

www.washingtonwatertrust.org

More information will be posted at:

www.coic.us

“ShoreStreet” is document access
password.

